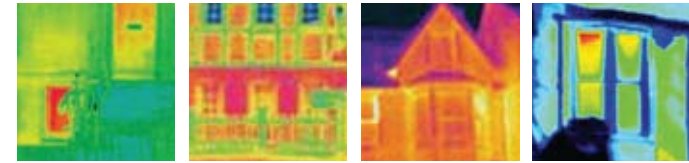




# Seminar Timetable

## Monday 22nd Nov 2010



- 1.00pm Registration at Millennium Hall, Cork City Hall, Cork
- 1.20pm **Emmeline Henderson**, Conservation Manager & Assistant Director, Irish Georgian Society, Welcome
- 1.30pm **Pat Ruane**, Conservation Officer, Cork County Council, *Energy Performance in Protected Structures; planning implications and grants*
- 2.00pm **Paul Arnold**, Principal, Paul Arnold Architects, *Improving Thermal Efficiency: advice for owners of traditional buildings*
- 2.30pm **Katriona Byrne** *Studies in the Application of Building Energy Rating to Historic Building*
- 3.00pm Tea & Coffee
- 3.30pm **Edith Blennerhassett**, Director, Engineering Environments, *Building Services Implications in Historic Houses*
- 4.00pm **Peter Smith**, Technical Advisor, Ecological Building Systems, *The Use of Appropriate Materials in Maximising Energy Efficiency and Moisture Control in Historic Houses*
- 4.30pm Q&A, **Mona Hallinan**, Conservation Officer, Cork County Council
- 5.00pm Close & Thank You

The seminar will provide practical, appropriate and easy to understand advice and guidance on how to thermally upgrade historic buildings and reduce energy costs whilst ensuring that no damage occurs to their historic fabric and character. Crucially, attendance will equip the homeowner with the knowledge of how to obtain the most return for the least cost by doing 'as much as necessary and as little as possible' to ensure a comfortable and sustainable home to live in.

The intended audience is the owner of protected structures and buildings located within architectural conservation areas, as well as owners of any traditionally built house.

The seminar will also be of interest to architects and attendance at the seminar is recognised by the RIAI as a 'Structured CPD Activity' (2.5 CPD points)

**RIAI CPD LINKS**  
RIAI Recognised CPD Providers

kitchen appliances, light bulbs etc) with good controls (time clocks, thermostats and zoning). Going beyond this it is possible to consider 'green' or 'sustainable' systems (with potential for grant funding) such as solar panels which generate hot water or electricity from the sun or wood fired boilers etc. Edith will give an overview of the options and opportunities to reduce your carbon footprint whilst keeping the built heritage intact.

### KATRIONA BYRNE

**Biography:** **Katriona Byrne, MA, MUBC, Arc Dip Rec** has worked for the conservation departments of Dublin City Council, Cork City Council and Roscommon County Council.

**Abstract:** *Studies in the Application of Building Energy Rating to Historic Building.* This paper outlines recent research in applying DEAP, the national system of assigning a Building Energy Rating to a building, to some historic buildings in County Roscommon. Although Protected Structures are exempt from compliance with Part L of the Building Regulations many owners and occupiers wish to improve the energy efficiency of their buildings. These studies examine how historic buildings perform in DEAP and are an attempt to propose ways in which changes can be introduced to both improve the rating and protect the building and its character at the same time.

### PAT RUANE

**Pat Ruane B.Arch, MUBC, MRAI**, is an architect originally from Co. Mayo. After graduating from UCD in 1984 he worked both in Ireland and further afield for a number of conservation practices. Since 2000 he has worked as Conservation Officer with Cork City Council and has a special interest in the ordinary buildings of town and country, which house the activities of everyday life.

**Abstract:** *Energy Performance in Protected Structures; planning implications and grant aid.* Planning implications of carrying out works to increase energy performance of protected structures and the requirements to respect the character of a protected structure when carrying out works. Availability of grants to assist in carrying out conservation works and thermal upgrading works

### PETER SMITH

**Peter Smith, Technical Advisor, Ecological Building Systems** has many years experience as a project manager on new build and conservation projects, to include Ardraccan House, Meath & Luttrellstown Castle, Dublin.

**Abstract:** *The Use of Appropriate Materials in Maximising Energy Efficiency and Moisture Control in Historic Buildings.* This paper deals with the theme of the use of appropriate materials in maximising energy efficiency and moisture control in historic buildings from a building contractor's perspective. It will examine the following: breathable and natural insulations; draught proofing; intelligent moisture management; and dealing with damp internal walls.

## Abstracts & Biographies of Speakers

### PAUL ARNOLD

**Paul Arnold, B.Arch, FRIAI, RIBA**, is the principal of Paul Arnold Architects, which is a Grade I RIAI Conservation Accredited practice. Paul Arnold Architects researched and wrote the recently published DoEHLG's Advice Series on improving thermal efficiency in traditionally built buildings.

**Abstract:** *Improving Thermal Efficiency: advice for owners of traditional buildings.* Traditional buildings have thermal performance characteristics arising from their design and construction which, if properly understood, can be employed to advantage. Failure to appreciate how buildings and materials behave can result in inappropriate application of technologies developed for modern construction. Issues of use and realistic expectation must also be addressed.

### EDITH BLENNERHASSETT

**Edith Blennerhassett, BE CEng, MUBC, MCIBSE, MIEI**, is Director of Building Services, Engineering Environments where in the capacity of services engineer she has worked on a series of sustainable and historic buildings.

**Abstract:** *Building Services Implications - Lean, Mean & Green.*

There are a number of ways of improving the energy efficiency and thus running costs of an historic building. Many of these are achieved simply by using more efficient modern equipment (boilers,